



18 MAY 2019  
#V002MN7G1  
Copy 2 of 5 copies

Classification:  
**CONFIDENTIAL**

VJTF 5 BAT  
Al Udeid AB  
25.1319845,51.3162142,13z

## OPERATIONS ORDER MN7G1 “BEARCLAW”

Time zone:	WHISKEY	Distribution:	5BAT, 1VJTF COY 2PLT, PC
References:	Grid Map 86651 VJTF Operations Protocol 1R2 VJTF Reg. 101-C NRF COPJ + TFAS		OPS ACO IBAT Logistics Sgt US 16 CAB DTG

### TASK ORGANIZATION (LIST NRF OM 101-5)

- a. NRF VJTF 2 PLT
- b. NRF 2 SPT GRP
- c. 6SQDR AH-99

### 1. TERRAIN AND WEATHER

#### A. TERRAIN

- 1) MSR LIMA provides a handrail for movement and avenues for approach.
- 2) MSR OSLO provides flanking avenues.
- 3) Zargabad crowded after 08:00 ZULU.
- 4) Hill sides west and east of ALPHA provide BOF and OW positions.
- 5) River banks provide BOF and vehicle cover.
- 6) Effects on enemy: none.
- 7) Effects on friendly: none.
- 8) Key terrain: Arid, mountain valley, sparse vegetation, limited cover outside of urban areas.

#### B. WEATHER

- 1) Temperature High: 34C.
- 2) Temperature Low: 17C, Dew point: 15C.
- 3) 2 inches of rain over the next 24 to 48 hours.
- 4) Fog disperses around 06:30.
- 5) Wind: Moderate 8-15 Knots.



## 2. SITUATION

OpFor: Pashtun forces (ELVIS).

ELVIS has captured NATO asset BEARCLAW after they shot down XRAY.

### A. ENEMY FORCES

- 1) ELVIS strongholds are concentrated in grids ALPHA and BRAVO.
- 2) Small arms and IFV's patrol grids ALPHA and BRAVO. IFV's patrol Zargabad and surrounding area.
- 3) Strength: 2-4 Squads in grid BRAVO, 5+ Squads in grid ALPHA + IFV's.
- 4) MPCOA: Enemy holds BEARCLAW in grid ALPHA or BRAVO.
- 5) ELVIS arms: various small arms, Russian, Iranian and US origin.  
AT capability: RPG, MPRL.
- 6) ELVIS CR: mostly casual clothing + light body armor + improvised vests. Most ELVIS carry backpacks with explosives, IED's and supplies.

### B. FRIENDLY FORCES

- 1) VJTF 5 BAT, 2<sup>nd</sup> Platoon. OUS: ANNEX A.
- 2) NRF 2 SPT GRP to arrive around 06:00 hrs.

### C. NEUTRAL

- 1) CSAT (CEASAR) forces are to be considered neutral.
- 2) CEASAR controlled zones are to be avoided.

### D. CIVILIANS

- 1) Civilians in the AO are generally neutral towards coalition forces.
- 2) Religious sites are to be avoided.

### E. ATTACHMENTS AND DETACHMENTS

- 1) Attachments: 1 x AH-99, 6 CAVBAT, 6<sup>TH</sup> SQDR, ex LMAB.
- 2) Detachments: none.

## 3. MISSION

2PLT to infil at RV ZEBRA NLT 04:00. 2PLT is search and locate BEARCLAW. 2PLT to locate and neutralize XRAY. 2PLT to exfil at RV ZEBRA NLT 07:30.

## 4. EXECUTION

### A. CONCEPT OF OPERATIONS

- 1) 2PLT to move out ex LMAB towards MSR LIMA. ETA at RV ZEBRA 11 hours.
- 2) 2PLT to regroup at RV ZEBRA.
- 3) 2PLT to travel in column convoy to AO. Ex AO maintain travelling formation.
- 4) ORP's to be established on-site.
- 5) Non-linear and linear danger area's to be crossed according to SOP.
- 6) Execution of mission objectives to be briefed on site by PC.



## B. COMMANDERS INTENT

2PLT will travel in SOP convoy formation to ZEBRA from where ORP's are established. 2PLT 3 will set-up BOF. 2PLT 1 and 2 will search grids ALPHA and BRAVO and secure BEARCLAW. 2PLT will locate and neutralize XRAV whilst maintaining security for BEARCLAW. 2PLT will exfil at ZEBRA NLT 07:30z.

## C. SUB UNIT MISSIONS

None.

## D. COORDINATING INSTRUCTIONS

- 1) Order of movement, formations: On-site commanders intent, SOP
- 2) Actions at halts (short/long): SOP
- 3) Routes (primary/alternate): MSR LIMA, MSR OSLO
- 4) IRP: RV ZEBRA
- 5) Actions at danger areas: SOP
- 6) Actions on enemy contact: SOP
- 7) Reorganization and consolidation: SOP
- 8) Fire control measures: On-site commanders intent, SOP
- 9) Priority Intelligence Requirements: On-site, MOTHER
- 10) Debriefing requirements: Commanders intent
- 11) Reports: ACE: SOP, SALUTE: SOP
- 12) ROE: On-site commanders intent, SOP

## 5. SERVICE & SUPPORT

### A. SUPPLY

SOPs in effect for sustainment operations. CCPs and Medivac PZ to be established on-site

- 1) Rations: ammo and material supply in vehicles, NRF SOP
- 2) Uniforms: NRF VJTF 2 PLT SOP
- 3) Arms and ammunitions: NRF VJTF 2 PLT SOP
- 4) Vehicles:
  - a. PC – 1 x MRAP
  - b. 2-1 Squad/2-2 Squad – 4 x MRAP, 2 x MRAP HMG
  - c. 2-3 Squad – 2 x MRAP GMG
- 5) Captured material: SOP

### B. SUPPORT

CAS: RAPTOR, AH-99 ex LMAB. Station: OSCAR

## 6. COMMAND & SIGNAL

### A. COMMAND

- 1) Commander leader location: SOP, Commanders intent
- 2) Chain of Command: 2 PC, 2 SQL, 2 WTL, 2 FTL



## B. SIGNAL

- 1) Frequencies and call signs: Annex B
- 2) Pyrotechnics and signals: SOP
- 3) Challenges and passwords: Annex B
- 4) Code words: SOP

## NOTES

NATO PR had to do a spin on the downed UH-80 (XRAY) story for the media when The Pashtun released photos of the crash site to Al Jazeera. The story is that The Pashtun shot down a NATO transport helicopter that was picking a NATO medical relief team. The gruesome photos show the KIA crew and a sergeant from 4 PLT.

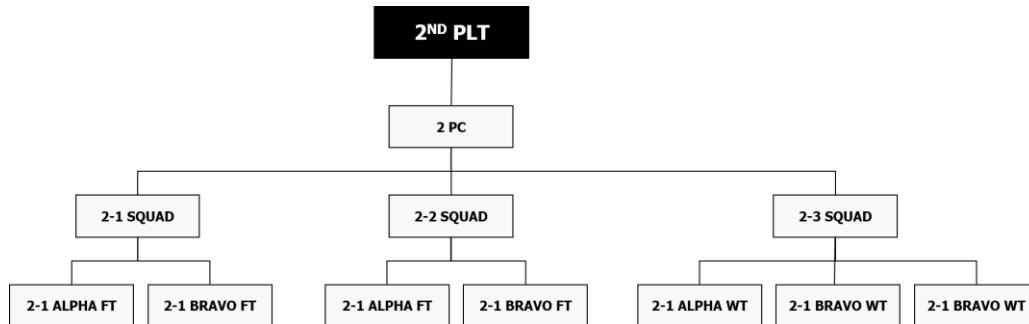
BEARCLAW is a NATO intelligence asset who has been in deep cover with the Pashtun Yaqubzai tribe, approx. 40 Km's south of ALPHA. BEARCLAW possesses crucial intel. It is top priority that BEARCLAW makes it back to HQ alive.

Last night the story broke that CSAT and Pashtun leaders have engaged into 'diplomatic discussions'. At the time of writing little is known about the nature of these discussions. MOTHER is in constant contact with CSAT. FIRESTONE will keep you posted of any developments pertinent to your mission.



# ANNEX A TO OPERATIONS ORDER MN7G1

## NRF VJTF 5 BAT, 2<sup>ND</sup> PLATOON



### **2 PC: 2 pax**

Platoon Commander (PC), Radio Telephone Operator (RTO)

### **2-1 RIFLE SQUAD: 2 pax**

Squad Leader (SQL), Squad Medic (SM)

### **2-1 ALPHA / 2-1 BRAVO FIRE TEAMS: 8 pax**

Fire Team Leader (FTL), Auto Rifleman (AR), Asst. Auto Rifleman (AAR), Rifleman AT (RAT)

### **2-2 RIFLE SQUAD: 2**

Squad Leader (SQL), Squad Medic (SM)

### **2-2 ALPHA / 2-2 BRAVO FIRE TEAMS: 8 pax**

Fire Team Leader (FTL), Auto Rifleman (AR), Asst. Auto Rifleman (AAR), Rifleman AT (RAT)

### **2-3 WEAPONS SQUAD: 2 pax**

Squad Leader (SQL), Squad Medic (SM)

### **2-3 ALPHA: 2 pax**

Machine Gunner (MG), Asst. Machine Gunner (AMG)

### **2-3 BRAVO: 2 pax**

Missile Specialist (MS), Asst. Missile Specialist (AMS)

### **2-3 CHARLIE: 2 pax**

Heavy Machine Gunner (HMG), Asst. Heavy Machine Gunner (AHMG)



# ANNEX B TO OPERATIONS ORDER MN7G1

## Frequencies and Call Signs

### FREQUENCIES

Platoon Net LR	40
Platoon Cmd	100.00
2-1 SQUAD	110.00
2-1 ALPHA	111.00
2-1 BRAVO	112.00
2-2 SQUAD	120.00
2-2 ALPHA	121.00
2-2 BRAVO	122.00
2-3 SQUAD	130.00
2-3 ALPHA	131.00
2-3 BRAVO	132.00
2-3 CHARLIE	133.00

### CALL SIGNS

ACO	FIRESTONE
CAS	RAPTOR
SatNav AJR	ACE
VJTF 5 BAT TOC	MOTHER
NRF 2 SPT GRP	UNCLE
UH-80 objective	XRAY
NATO asset objective	BEARCLAW
CSAT Forces	CAESAR
Pashtun Forces	ELVIS

### NOTAF

ZEBRA	RV at MSR LIMA
ALPHA	Grid: 030,029 - 050,010
BRAVO	Grid: 023,054 - 033,044
LIMA	Main MSR
OSLO	Secondary MSR

### CHALLENGES

Challenge	Password
STINGER	WATERSKI



# ANNEX C TO OPERATIONS ORDER MN7G1

Grid Map 86651

